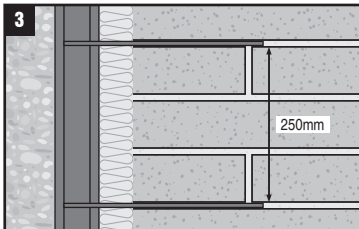
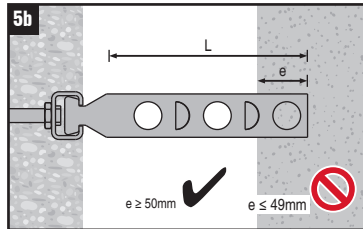
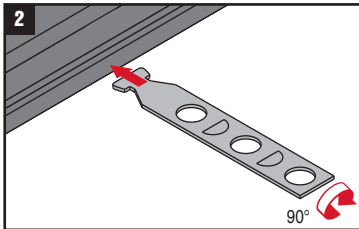
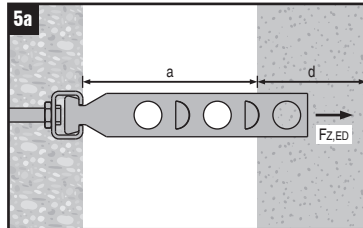
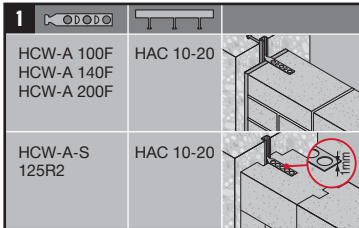


2030516-09-2011



6	max.	F <sub>o,s</sub> * (kN)	F <sub>z,s</sub> * (kN)
HCW-A 100F	2.7	4.1	
HCW-A 140F	2.7	4.1	
HCW-A 200F	2.7	4.1	
HCW-A-S 125R2	1.4	2.9	
	a (mm)	d (mm)	L (mm)
HCW-A 100F	20-40	115	85
HCW-A 140F	40-80	115	120
HCW-A 200F	85-140	115	180
HCW-A-S 125R2	-	-	105

\* Stahlversagen; Verbundnachweis nach DIN 1053-100