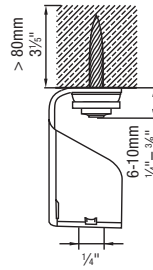
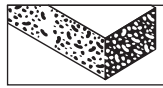


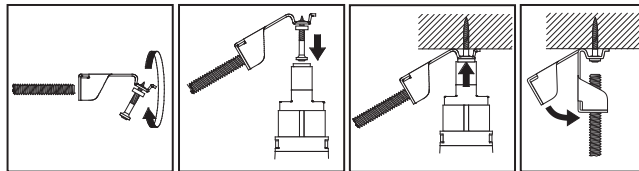
387208
6.4.2011

X-HS W6 U22 P8 S15 # 386221



für/for/pour-
DX 460 F8
DX 351 F8
DX 36

387208



Suitable for indoor use in other than wet locations.
Cat. No. X-HS W6 U22 P8 S15 installed in 4000 psi to 6000 psi concrete is suitable for support of maximum 2 inch Trade Size EMT, RMC and IMC and 3 inch Trade Size Rigid PVC conduit on maximum 10 ft. spacing.

UL
LISTED
CONDUIT AND CABLE HARDWARE
9DX1