



X-EKB MX CABLE CLAMP

Data Sheet

[English](#)

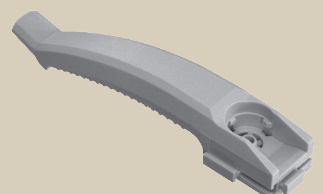
[Deutsch](#)

[Español](#)

[Français](#)

[Italiano](#)

03.2024



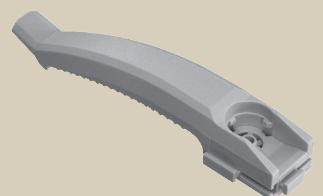


X-EKB MX CABLE CLAMP

Data Sheet

[English](#)

03.2024

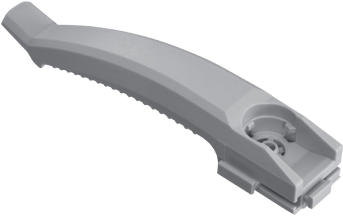


CONTENTS

1	Product information	2
1.1	Product description	2
2	Application conditions	2
2.1	Application examples	2
2.2	Base materials	2
2.3	Load conditions	2
2.4	Environmental conditions	3
2.5	Temperature conditions	3
3	Approvals and certificates	3
4	Product data	3
4.1	Dimensions	3
4.2	Material properties for plastic parts	3
5	System recommendation	4
5.1	Fastener recommendation	4
5.2	Connection type	4
6	Application requirements	5
6.1	Base material properties	5
6.2	Application range in steel	5
7	Performance data	5
7.1	Recommended loads under quasi static/static loading	5
8	Quality assurance	6
8.1	Fastening inspection	6
9	Ordering information	6
9.1	Item number and description	6

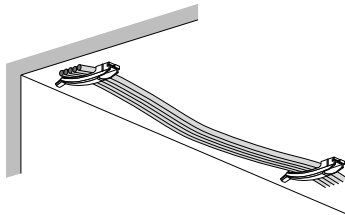
1 PRODUCT INFORMATION

1.1 Product description

Designation	Features
<p>X-EKB MX</p> 	<ul style="list-style-type: none"> • Optimized for your BX nailer - friction-fit nailer nose and drill-less fastening method allows for faster, easier, and virtually dust-free installations. • Versatile fastening methods - compatible with push-fit anchors, wood and metal screws, or standard plastic anchors for fastening to a wide variety of base materials. • Interlocking system - fully modular system allows you to combine multiple clamps to increase your range of applications • High-quality installations - ETA approved for a 50-year lifetime in cracked concrete, and UL listed • More sustainably produced - made from eco-friendlier materials to help reduce carbon footprint. • Fire safety - flame retardant version available

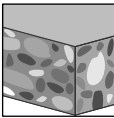
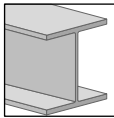
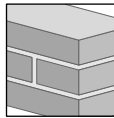
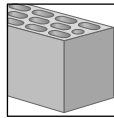
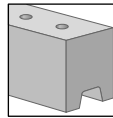
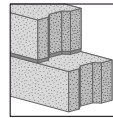
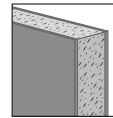
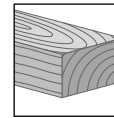
2 APPLICATION CONDITIONS

2.1 Application examples



Fastening bunched cables

2.2 Base materials

							
Concrete	Steel	Solid brick	Hollow brick	Limestone masonry	Aerated concrete	Drywall / Gypsum board	Wood

2.3 Load conditions



Static / quasi-static

2.4 Environmental conditions



Dry indoor



• For more details, please refer to the [Hilti Corrosion Handbook](#)

2.5 Temperature conditions

Element	Component part	Service temperature	Installation temperature
		T [°C]	T [°C]
X-EKB MX	Cable clamp	0 – 40	-10 – 40

3 APPROVALS AND CERTIFICATES

Authority	Approval / Certificate number	Date of issue
Deutsches Institut für Bautechnik (DIBt)	ETA-16/0301	12/19/2023

4 PRODUCT DATA

4.1 Dimensions

Technical Drawing	Element	Height h [mm]	Length l [mm]	Length l _s [mm]	Width w [mm]
	X-EKB 08 (02) MX	23	132	80	24.4

4.2 Material properties for plastic parts

Element	Component part	Material	Color	Other properties
X-EKB MX	Cable clamp	High Density Polyethylene (HDPE)	Light grey	Halogen free, LABS free, Silicon free, UV resistant material

5 SYSTEM RECOMMENDATION

5.1 Fastener recommendation

Element	Fastener	Base material	Fastening method
X-EKB MX	X-P 20 B4 MX, X-P 20 B3 MX	Concrete, Limestone masonry	Recommended
	X-P 17 B4 MX, X-P 24 B4 MX, X-P 17 B3 MX, X-P 24 B3 MX, X-C 20 B4 MX, X-C 20 B3 MX, X-C 24 B3 MX	Concrete, Limestone masonry	Suitable
	X-S 14 B4 MX, X-S 14 B3 MX	Steel	Suitable
	X-EAI 30	Concrete	Recommended
	HMF 5x25, HMF 6x30, HUD-2 5x25, HUD-2 6x30	Solid brick, Hollow brick, Aerated concrete, Drywall / Gypsum board	Suitable
	S-WS 03 Z 4.2x35	Wood	Recommended

5.2 Connection type

Connection type	Ceiling	Element	Connected Element	Fastener
CT 1.1		X-EKB 08 (02) MX		HMF 5x25, HMF 6x30, HUD-2 5x25, HUD-2 6x30,
CT 2.1		X-EKB 08 (02) MX	X-EKB 08 (02) MX	S-WS 03 Z 4.2x35, X-C 20 B3 MX, X-C 20 B4 MX, X-C 24 B3 MX,
CT 3.1		X-EKB 08 (02) MX	X-EKS 16 (02) MX, X-EKS 19/20 (02) MX, X-EKS 25 (02) MX, X-EKS 32 (02) MX	X-P 17 B3 MX, X-P 17 B4 MX, X-P 24 B3 MX, X-P 24 B4 MX,
CT 4.1		X-EKB 08 (02) MX	X-EKSC 16 (02) MX, X-EKSC 19/20 (02) MX, X-EKSC 25 (02) MX, X-EKSC 32 (02) MX	X-P 20 B3 MX, X-P 20 B4 MX, X-S 14 B3 MX, X-S 14 B4 MX
CT 5.1		X-EKB 08 (02) MX	X-FC 16-20 MX, X-FC 20-25 MX, X-FC 25-32 MX, X-FC 32-40 MX	
CT 6.1		X-EKB 08 (02) MX		
CT 7.1		X-EKB 08 (02) MX	X-EKB 08 (02) MX	X-EAI 30

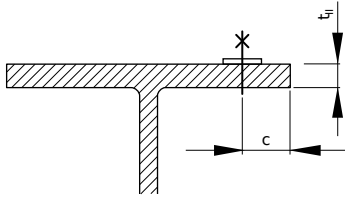
Positioning of fastening point.



• For floor applications, use the same disposition of elements as for ceiling.

6 APPLICATION REQUIREMENTS

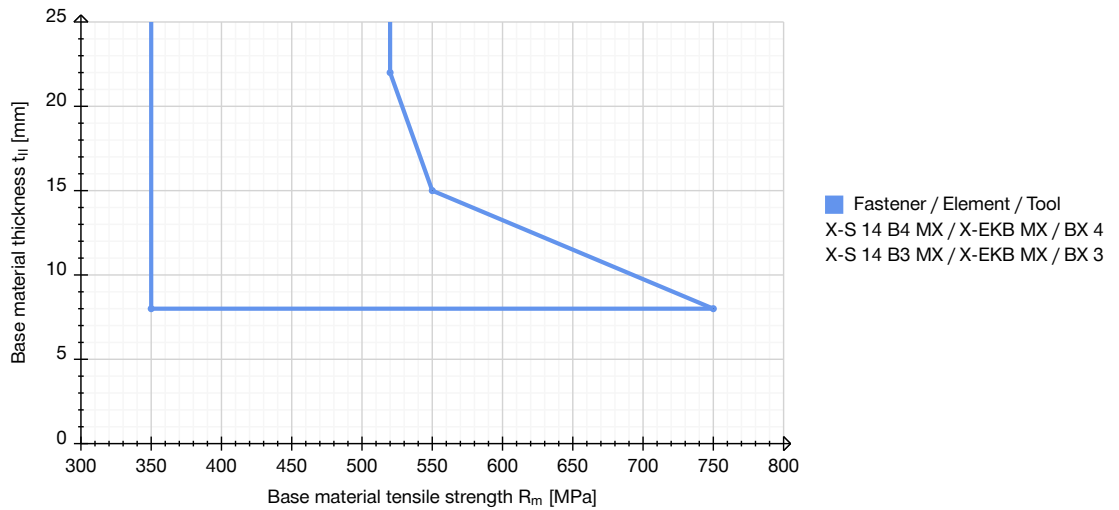
6.1 Base material properties



Fastening element to steel

Base material	Steel
Base material thickness t_{II} [mm]	≥ 8
Edge distance c [mm]	≥ 15

6.2 Application range in steel



7 PERFORMANCE DATA

7.1 Recommended loads under quasi static/static loading

Connection Type	Tension load N_{rec} [kN]
CT 1.1, CT 2.1, CT 3.1, CT 4.1, CT 5.1, CT 6.1, CT 7.1	0.006



- Redundancy of fastening points is required.
- Minimum number of fastening points for safety relevant fastenings: ≥ 5 .

8 QUALITY ASSURANCE

8.1 Fastening inspection

Ceiling	Element	Fastener	Fastener standoff h_{NHS} [mm]
	X-EKB 08 (02) MX	X-C 20 B3 MX, X-C 20 B4 MX, X-C 24 B3 MX, X-P 17 B3 MX, X-P 17 B4 MX, X-P 20 B3 MX, X-P 20 B4 MX, X-P 24 B3 MX, X-P 24 B4 MX	6–11
		X-S 14 B3 MX, X-S 14 B4 MX	6–9



- Visible setting failures must be replaced with a new fastener, not in the same hole.
- These are abbreviated instructions which may vary by application.
- Always review/ follow the instructions accompanying the product.

9 ORDERING INFORMATION

9.1 Item number and description

Designation	Item number	Description
HMF 5x25	2185263	HMF Wall plug
HMF 6x30	2185268	HMF Wall plug
HUD-2 5x25	2287817	HUD-2 Plastic wall plug
HUD-2 6x30	2287820	HUD-2 Plastic wall plug
S-WS 03 Z 4.2x35	413322	S-WS 03 Z Sharp-point electrical screws
X-C 20 B3 MX	2123993	X-C B3 MX Concrete nails (collated)
X-C 20 B4 MX	2361658	X-C B4 MX Concrete nails (collated)
X-C 24 B3 MX	2123994	X-C B3 MX Concrete nails (collated)
X-EAI 30	2388261	X-EA MX Push fit anchor
X-EKB 08 (02) MX	2388251	X-EKB MX Cable clamp
X-P 17 B3 MX	2156216	X-P B3 MX Concrete nails (collated)
X-P 17 B4 MX	2361537	X-P B4 MX Concrete nails (collated)
X-P 20 B3 MX	2156217	X-P B3 MX Concrete nails (collated)
X-P 20 B4 MX	2361538	X-P B4 MX Concrete nails (collated)
X-P 24 B3 MX	2156218	X-P B3 MX Concrete nails (collated)
X-P 24 B4 MX	2361539	X-P B4 MX Concrete nails (collated)
X-S 14 B3 MX	2156392	X-S B3 MX Steel nails (collated)
X-S 14 B4 MX	2361654	X-S B4 MX Steel nails (collated)



Hilti Aktiengesellschaft
9494 Schaan, Liechtenstein
P +423-234 2965

www.facebook.com/hiltigroup
www.hilti.group

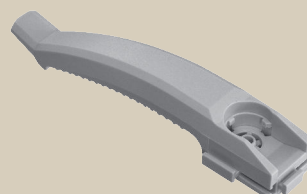


X-EKB MX KABELKLAMMER

Datenblatt

[Deutsch](#)

03.2024

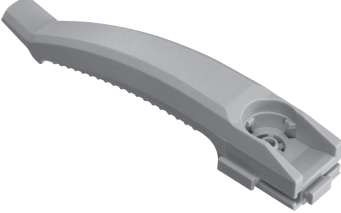


INHALTSVERZEICHNIS

1	Produktinformationen	2
1.1	Produktbeschreibung	2
2	Anwendungsbedingungen	2
2.1	Anwendungsbeispiele	2
2.2	Untergrundmaterial	2
2.3	Lastbedingungen	2
2.4	Umgebungsbedingungen	3
2.5	Temperaturbedingungen	3
3	Zulassungen und Zertifizierungen	3
4	Produktdaten	3
4.1	Abmessungen	3
4.2	Materialeigenschaften für Kunststoffteile	3
5	Systemempfehlung	4
5.1	Empfohlenes Befestigungselement	4
5.2	Verbindungstyp	4
6	Anwendungsanforderungen	5
6.1	Eigenschaften des Untergrundmaterials	5
6.2	Anwendungsbereich an Stahl	5
7	Leistungsdaten	5
7.1	Empfohlene Lasten unter statischer bzw. quasi-statischer Belastung	5
8	Qualitätssicherung	6
8.1	Kontrolle der Setztiefe	6
9	Bestellinformationen	6
9.1	Artikelnummer und Beschreibung	6

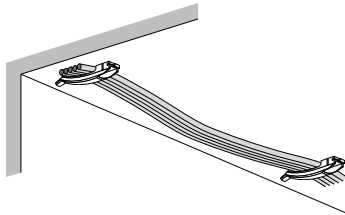
1 PRODUKTINFORMATIONEN

1.1 Produktbeschreibung

Bezeichnung	Besondere Eigenschaften
<p>X-EKB MX</p> 	<ul style="list-style-type: none"> • Optimiert für BX Bolzensetzgeräte - reibschlüssige Gerätenase und bohrerlose Befestigungsmethode ermöglichen eine schnellere, einfachere und praktisch staubfreie Montage. • Vielseitige Befestigungsmethoden - kompatibel mit Steckdübeln, Schrauben für Holz und Metall oder Standard-Kunststoffdübeln für eine Vielzahl von Untergrundmaterialien. • Verriegelungssystem - vollständig modulares System bietet die Möglichkeit zur Kombination mehrerer Klemmen für weitere Anwendungsmöglichkeiten • Hochwertige Installationen - ETA-Zulassung für eine Lebensdauer von 50 Jahren in gerissenem Beton sowie mit UL-Zulassung • Nachhaltigere Produktion - hergestellt aus umweltfreundlicheren Materialien, um den CO₂-Ausstoß zu verringern. • Brandschutz - flammhemmende Version erhältlich

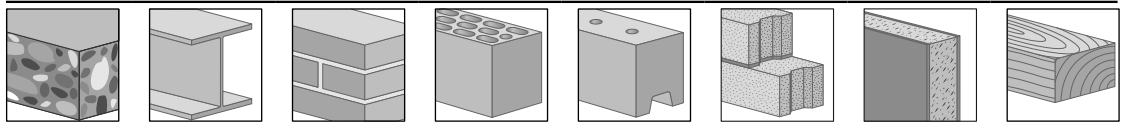
2 ANWENDUNGSBEDINGUNGEN

2.1 Anwendungsbeispiele



Befestigung gebündelter Kabel

2.2 Untergrundmaterial



Beton

Stahl

Vollziegel

Hohlziegel

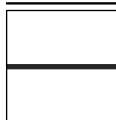
Kalkstein-
mauerwerk

Porenbeton

Trockenbau /
Gipskarton-
platte

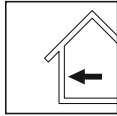
Holz

2.3 Lastbedingungen



Statisch/quasi-statisch

2.4 Umgebungsbedingungen



Trockene Innenräume



• Weitere Einzelheiten entnehmen Sie bitte dem [Hilti Corrosion Handbook](#)

2.5 Temperaturbedingungen

Element	Bauteil	Betriebstemperatur	Einbautemperatur
		T [°C]	T [°C]
X-EKB MX	Kabelklammer	0 – 40	-10 – 40

3 ZULASSUNGEN UND ZERTIFIZIERUNGEN

Behörde	Zulassungs- / Zertifizierungsnummer	Ausgabedatum
Deutsches Institut für Bautechnik (DIBt)	ETA-16/0301	19.12.2023

4 PRODUKTDATEN

4.1 Abmessungen

Technische Zeichnung	Element	Höhe h [mm]	Länge l [mm]	Länge l _s [mm]	Breite w [mm]
	X-EKB 08 (02) MX	23	132	80	24,4

4.2 Materialeigenschaften für Kunststoffteile

Element	Bauteil	Material	Farbe	Sonstige Eigenschaften
X-EKB MX	Kabelklammer	HDPE (High Density Polyethylen)	Lichtgrau	Halogenfrei, LABS-frei, Silikonfrei, UV-beständiges Material

5 SYSTEMEMPFEHLUNG

5.1 Empfohlenes Befestigungselement

Element	Befestigungselement	Untergrundmaterial	Befestigungsmethode
X-EKB MX	X-P 20 B4 MX, X-P 20 B3 MX	Beton, Kalksteinmauerwerk	Empfohlen
	X-P 17 B4 MX, X-P 24 B4 MX, X-P 17 B3 MX, X-P 24 B3 MX, X-C 20 B4 MX, X-C 20 B3 MX, X-C 24 B3 MX	Beton, Kalksteinmauerwerk	Geeignet
	X-S 14 B4 MX, X-S 14 B3 MX	Stahl	Geeignet
	X-EAI 30	Beton	Empfohlen
	HMF 5x25, HMF 6x30, HUD-2 5x25, HUD-2 6x30	Vollziegel, Hohlziegel, Porenbeton, Trockenbau / Gipskartonplatte	Geeignet
	S-WS 03 Z 4.2x35	Holz	Empfohlen

5.2 Verbindungstyp

Verbin- dungstyp	Decke	Element	Verbundenes Element	Befestigungselement
CT 1.1		X-EKB 08 (02) MX		HMF 5x25, HMF 6x30, HUD-2 5x25, HUD-2 6x30,
CT 2.1		X-EKB 08 (02) MX	X-EKB 08 (02) MX	
CT 3.1		X-EKB 08 (02) MX	X-EKS 16 (02) MX, X-EKS 19/20 (02) MX, X-EKS 25 (02) MX, X-EKS 32 (02) MX	S-WS 03 Z 4.2x35, X-C 20 B3 MX, X-C 20 B4 MX, X-C 24 B3 MX,
CT 4.1		X-EKB 08 (02) MX	X-EKSC 16 (02) MX, X-EKSC 19/20 (02) MX, X-EKSC 25 (02) MX, X-EKSC 32 (02) MX	X-P 17 B3 MX, X-P 17 B4 MX, X-P 24 B3 MX, X-P 24 B4 MX,
CT 5.1		X-EKB 08 (02) MX	X-FC 16-20 MX, X-FC 20-25 MX, X-FC 25-32 MX, X-FC 32-40 MX	X-P 20 B3 MX, X-P 20 B4 MX, X-S 14 B3 MX, X-S 14 B4 MX
CT 6.1		X-EKB 08 (02) MX		X-EAI 30
CT 7.1		X-EKB 08 (02) MX	X-EKB 08 (02) MX	

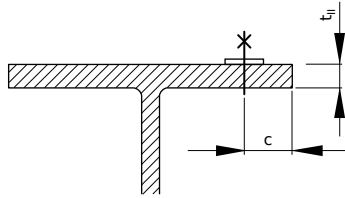
Positionierung von Befestigungspunkten.



- Bei Boden Anwendungen ist die gleiche Anordnung der Elemente wie bei der Decke zu verwenden.

6 ANWENDUNGSANFORDERUNGEN

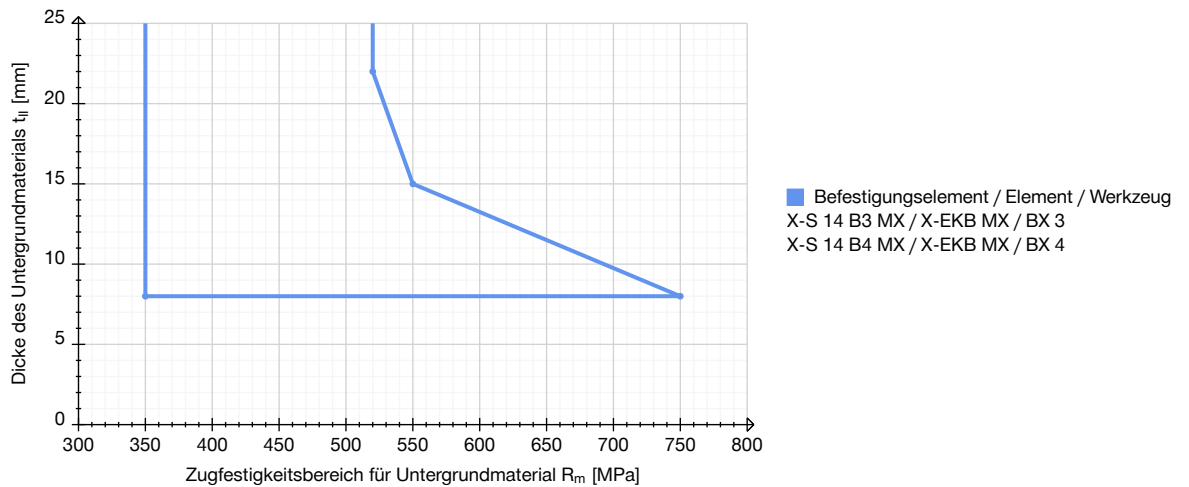
6.1 Eigenschaften des Untergrundmaterials



Befestigung von Element an Stahl

Untergrundmaterial	Stahl
Untergrundmaterialdicke t_{II} [mm]	≥ 8
Randabstand c [mm]	≥ 15

6.2 Anwendungsbereich an Stahl



7 LEISTUNGSDATEN

7.1 Empfohlene Lasten unter statischer bzw. quasi-statischer Belastung

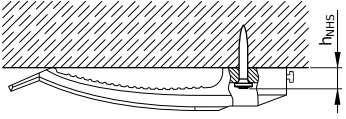
Verbindungstyp	Zuglast N_{rec} [kN]
CT 1.1, CT 2.1, CT 3.1, CT 4.1, CT 5.1, CT 6.1, CT 7.1	0,006



- Redundanz für Befestigungspunkte ist erforderlich.
- Mindestanzahl Befestigungspunkte für sicherheitsrelevante Befestigungen: ≥ 5 .

8 QUALITÄTSSICHERUNG

8.1 Kontrolle der Setztiefe

Decke	Element	Befestigungselement	Bolzenvorstand h_{NHS} [mm]
	X-EKB 08 (02) MX	X-C 20 B3 MX, X-C 20 B4 MX, X-C 24 B3 MX, X-P 17 B3 MX, X-P 17 B4 MX, X-P 20 B3 MX, X-P 20 B4 MX, X-P 24 B3 MX, X-P 24 B4 MX	6-11
		X-S 14 B3 MX, X-S 14 B4 MX	6-9



- Sichtbare Montagefehler sind durch ein neues Befestigungselement zu ersetzen.
- Dies ist eine gekürzte Fassung der Bedienungsanleitung. Der Wortlaut kann je nach Anwendung unterschiedlich sein.
- Lesen Sie immer die dem Produkt beiliegende Bedienungsanleitung und befolgen Sie diese.

9 BESTELLINFORMATIONEN

9.1 Artikelnummer und Beschreibung

Bezeichnung	Artikelnummer	Beschreibung
HMF 5x25	2185263	HMF Kunststoffdübel
HMF 6x30	2185268	HMF Kunststoffdübel
HUD-2 5x25	2287817	HUD-2 Kunststoff-Universaldübel
HUD-2 6x30	2287820	HUD-2 Kunststoff-Universaldübel
S-WS 03 Z 4.2x35	413322	S-WS 03 Z Holzschrauben
X-C 20 B3 MX	2123993	X-C B3 MX Nägel für Beton (magaziniert)
X-C 20 B4 MX	2361658	X-C B4 MX Nägel für Beton (magaziniert)
X-C 24 B3 MX	2123994	X-C B3 MX Nägel für Beton (magaziniert)
X-EAI 30	2388261	X-EA MX Steckdübel
X-P 17 B3 MX	2156216	X-P B3 MX Nägel für Beton (magaziniert)
X-P 17 B4 MX	2361537	X-P B4 MX Nägel für Beton (magaziniert)
X-P 20 B3 MX	2156217	X-P B3 MX Nägel für Beton (magaziniert)
X-P 20 B4 MX	2361538	X-P B4 MX Nägel für Beton (magaziniert)
X-P 24 B3 MX	2156218	X-P B3 MX Nägel für Beton (magaziniert)
X-P 24 B4 MX	2361539	X-P B4 MX Nägel für Beton (magaziniert)
X-S 14 B3 MX	2156392	X-S B3 MX Nagel für Stahl (magaziniert)
X-S 14 B4 MX	2361654	X-S B4 MX Nagel für Stahl (magaziniert)



Hilti Aktiengesellschaft
9494 Schaan, Liechtenstein
P +423-234 2965

www.facebook.com/hiltigroup
www.hilti.group

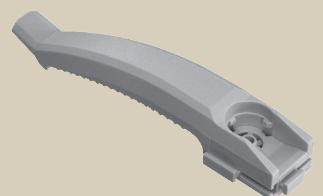


X-EKB MX ABRAZADERA PARA CABLES

Hoja de datos

[Español](#)

03.2024

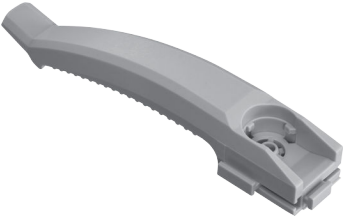


ÍNDICE

1	Información del producto	2
1.1	Descripción del producto	2
2	Condiciones de aplicación	2
2.1	Ejemplos de aplicación	2
2.2	Materiales base	2
2.3	Condiciones de carga	2
2.4	Condiciones ambientales	3
2.5	Condiciones de temperatura	3
3	Homologaciones y certificados	3
4	Datos del producto	3
4.1	Dimensiones	3
4.2	Propiedades del material para piezas de plástico	4
5	Recomendación del sistema	4
5.1	Recomendación de fijación	4
5.2	Tipo de conexión	5
6	Requisitos de aplicación	5
6.1	Propiedades del material base	5
6.2	Rango de aplicación en acero	6
7	Datos de rendimiento	6
7.1	Cargas recomendadas con carga estática o cuasiestática	6
8	Control de calidad	7
8.1	Control de profundidad de colocación	7
9	Información del pedido	7
9.1	Número y descripción del artículo	7

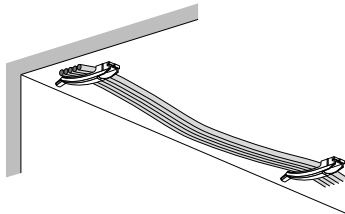
1. INFORMACIÓN DEL PRODUCTO

1.1. Descripción del producto

Designación	Características
<p>X-EKB MX</p> 	<ul style="list-style-type: none"> • Optimizada para la clavadora BX: la punta de la herramienta con ajuste de fricción y el método de fijación sin taladro permiten realizar instalaciones más rápidas, más sencillas y prácticamente sin polvo. • Métodos de fijación versátiles: compatibles con anclajes con ajuste a presión, tornillos de madera y metal o anclajes plásticos estándar para fijar una amplia variedad de materiales base. • Sistema de interbloqueo: el sistema, completamente modular, permite combinar múltiples abrazaderas para aumentar el rango de aplicaciones. • Instalaciones de alta calidad: solución con homologación ETA, vida útil de 50 años en hormigón fisurado y con certificación UL. • Producción más sostenible: fabricación con materiales más ecológicos para ayudar a reducir la huella de carbono. • Seguridad contra incendios - versión retardante de llama disponible

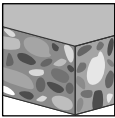
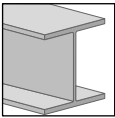
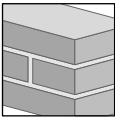
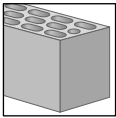
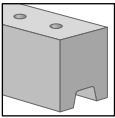
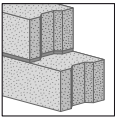
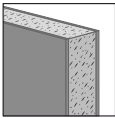
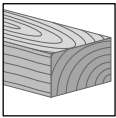
2. CONDICIONES DE APLICACIÓN

2.1. Ejemplos de aplicación

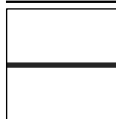


Fijación de cables agrupados

2.2. Materiales base

							
Hormigón	Acero	Ladrillo macizo	Ladrillo hueco	Albañilería de piedra caliza	Hormigón celular	Tabique seco / Placa de yeso	Madera

2.3. Condiciones de carga



Estática y cuasiestática

2.4. Condiciones ambientales



Interior seco

• Para obtener más información, consulte [Manual sobre corrosión de Hilti](#)

2.5. Condiciones de temperatura

Elemento	Pieza de componente	Temperatura de servicio T [°C]	Temperatura de instalación T [°C]
X-EKB MX	Abrazadera para cables	0 - 40	-10 - 40

3. HOMOLOGACIONES Y CERTIFICADOS

Autoridad	Número de homologación / certificado	Fecha de emisión
Deutsches Institut für Bautechnik (DIBt)	ETA-16/0301	12/19/2023

4. DATOS DEL PRODUCTO

4.1. Dimensiones

Dibujo técnico	Elemento	Altura h [mm]	Longitud l [mm]	Longitud l _s [mm]	Ancho w [mm]
	X-EKB 08 (02) MX	23	132	80	24,4

4.2. Propiedades del material para piezas de plástico

Elemento	Pieza de componente	Material	Color	Otras propiedades
X-EKB MX	Abrazadera para cables	Polietileno de alta densidad (HDPE)	Gris luminoso	Libre de disolventes y compuestos halogenados, Material resistente a los rayos UV, Sin halógenos, Sin LABS

5. RECOMENDACIÓN DEL SISTEMA

5.1. Recomendación de fijación

Elemento	Fijación	Material base	Método de fijación
X-EKB MX	X-P 20 B4 MX, X-P 20 B3 MX	Hormigón, Albañilería de piedra caliza	Recomendado
	X-P 17 B4 MX, X-P 24 B4 MX, X-P 17 B3 MX, X-P 24 B3 MX, X-C 20 B4 MX, X-C 20 B3 MX, X-C 24 B3 MX	Hormigón, Albañilería de piedra caliza	Apto
	X-S 14 B4 MX, X-S 14 B3 MX	Acero	Apto
	X-EAI 30	Hormigón	Recomendado
	HMF 5x25, HMF 6x30, HUD-2 5x25, HUD-2 6x30	Ladrillo macizo, Ladrillo hueco, Hormigón celular, Tabique seco / Placa de yeso	Apto
	S-WS 03 Z 4.2x35	Madera	Recomendado

5.2. Tipo de conexión

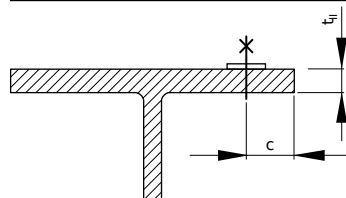
Tipo de conexión	Techo	Elemento	Elemento conectado	Fijación
CT 1.1		X-EKB 08 (02) MX		HMF 5x25, HMF 6x30,
CT 2.1		X-EKB 08 (02) MX	X-EKB 08 (02) MX	HUD-2 5x25, HUD-2 6x30,
CT 3.1		X-EKB 08 (02) MX	X-EKS 16 (02) MX, X-EKS 19/20 (02) MX, X-EKS 25 (02) MX, X-EKS 32 (02) MX	S-WS 03 Z 4.2x35, X-C 20 B3 MX, X-C 20 B4 MX, X-C 24 B3 MX,
CT 4.1		X-EKB 08 (02) MX	X-EKSC 16 (02) MX, X-EKSC 19/20 (02) MX, X-EKSC 25 (02) MX, X-EKSC 32 (02) MX	X-P 17 B3 MX, X-P 17 B4 MX, X-P 24 B3 MX, X-P 24 B4 MX,
CT 5.1		X-EKB 08 (02) MX	X-FC 16-20 MX, X-FC 20-25 MX, X-FC 25-32 MX, X-FC 32-40 MX	X-P 20 B3 MX, X-P 20 B4 MX, X-S 14 B3 MX, X-S 14 B4 MX
CT 6.1		X-EKB 08 (02) MX		
CT 7.1		X-EKB 08 (02) MX	X-EKB 08 (02) MX	X-EAI 30

Colocación del punto de fijación.

- Para las aplicaciones de suelo, se usa la misma disposición de elementos que para el techo.

6. REQUISITOS DE APLICACIÓN

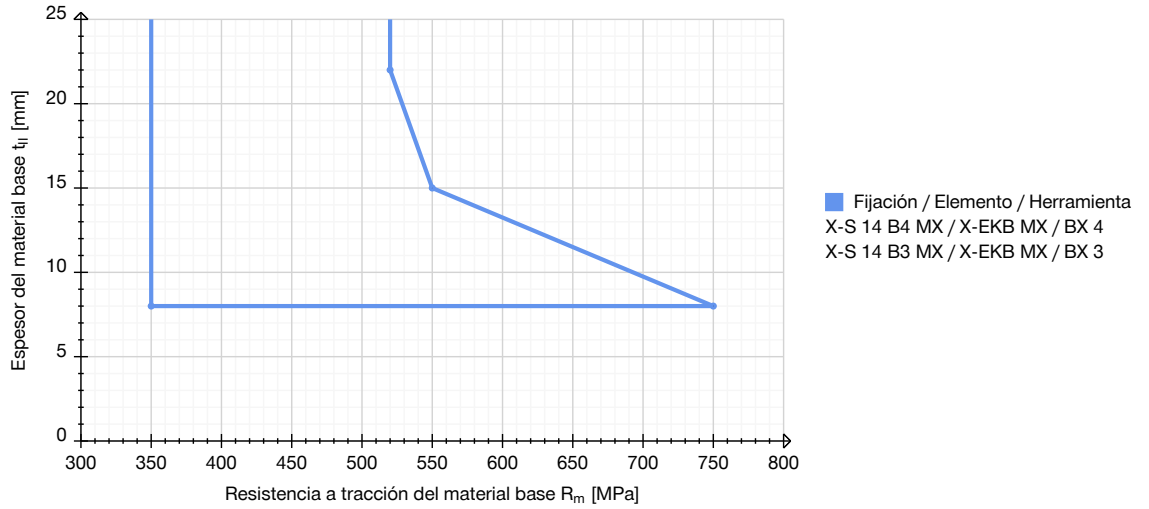
6.1. Propiedades del material base



Fijación de elemento sobre acero

Material base	Acero
Base material thickness t_{II} [mm]	≥ 8
Distancia al borde c [mm]	≥ 15

6.2. Rango de aplicación en acero



7. DATOS DE RENDIMIENTO

7.1. Cargas recomendadas con carga estática o cuasiestática

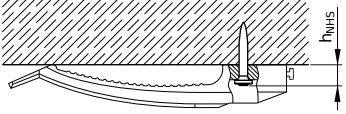
Tipo de conexión	Carga de tensión N_{rec} [kN]
CT 1.1, CT 2.1, CT 3.1, CT 4.1, CT 5.1, CT 6.1, CT 7.1	0,006



- Se requiere redundancia de puntos de fijación.
- Número mínimo de puntos de fijación para fijaciones en las que la seguridad es importante: ≥ 5 .

8. CONTROL DE CALIDAD

8.1. Control de profundidad de colocación

Techo	Elemento	Fijación	Fijación con distanciador h _{NHS} [mm]
	X-EKB 08 (02) MX	X-C 20 B3 MX, X-C 20 B4 MX, X-C 24 B3 MX, X-P 17 B3 MX, X-P 17 B4 MX, X-P 20 B3 MX, X-P 20 B4 MX, X-P 24 B3 MX, X-P 24 B4 MX	6-11
		X-S 14 B3 MX, X-S 14 B4 MX	6-9



- Los fallos de colocación visibles deben sustituirse por nuevas fijaciones, sin utilizar el mismo orificio.
- Estas instrucciones se encuentran abreviadas y pueden variar según la aplicación.
- Revise y siga siempre las instrucciones que acompañan al producto.

9. INFORMACIÓN DEL PEDIDO

9.1. Número y descripción del artículo

Designación	Número de elemento	Descripción
HMF 5x25	2185263	HMF Anclaje plástico
HMF 6x30	2185268	HMF Anclaje plástico
HUD-2 5x25	2287817	HUD-2 Tapón de pared de plástico
HUD-2 6x30	2287820	HUD-2 Tapón de pared de plástico
S-WS 03 Z 4.2x35	413322	S-WS 03 Z Tornillos para madera
X-C 20 B3 MX	2123993	X-C B3 MX Clavos para hormigón (en tiras)
X-C 20 B4 MX	2361658	X-C B4 MX Clavos para hormigón (en tiras)
X-C 24 B3 MX	2123994	X-C B3 MX Clavos para hormigón (en tiras)
X-EAI 30	2388261	X-EA MX Anclaje con ajuste a presión
X-P 17 B3 MX	2156216	X-P B3 MX Clavos para hormigón (en tiras)
X-P 17 B4 MX	2361537	X-P B4 MX Clavos para hormigón (en tiras)
X-P 20 B3 MX	2156217	X-P B3 MX Clavos para hormigón (en tiras)
X-P 20 B4 MX	2361538	X-P B4 MX Clavos para hormigón (en tiras)
X-P 24 B3 MX	2156218	X-P B3 MX Clavos para hormigón (en tiras)
X-P 24 B4 MX	2361539	X-P B4 MX Clavos para hormigón (en tiras)
X-S 14 B3 MX	2156392	X-S B3 MX Clavo de acero (en tiras)

Designación	Número de elemento	Descripción
X-S 14 B4 MX	2361654	X-S B4 MX Clavo de acero (en tiras)



Hilti Aktiengesellschaft
9494 Schaan, Liechtenstein
P +423-234 2965

www.facebook.com/hiltigroup
www.hilti.group



X-EKB MX AGRAFE À CÂBLE

Fiche technique

[Français](#)

03.2024

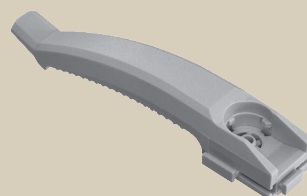
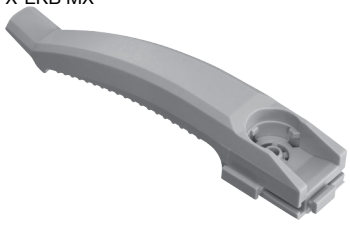


TABLE DES MATIÈRES

1	Informations sur le produit	2
1.1	Description du produit	2
2	Conditions d'application	2
2.1	Exemples d'application	2
2.2	Matériau support	2
2.3	Conditions de charge	2
2.4	Conditions environnementales	3
2.5	Conditions de température	3
3	Homologations et certificats	3
4	Données produit	3
4.1	Dimensions	3
4.2	Propriétés du matériau pour pièces plastiques	3
5	Recommandation système	4
5.1	Recommandation de fixation	4
5.2	Type de connexion	4
6	Exigences en matière d'application	5
6.1	Propriétés du matériau support	5
6.2	Plage d'applications en acier	5
7	Données de performance	5
7.1	Charges recommandées sous charge statique ou quasi-statique	5
8	Assurance qualité	6
8.1	Contrôle de profondeur d'ancrage	6
9	Informations de commande	6
9.1	Numéro d'article et description	6

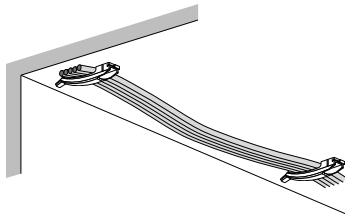
1 INFORMATIONS SUR LE PRODUIT

1.1 Description du produit

Désignation	Caractéristiques
<p>X-EKB MX</p> 	<ul style="list-style-type: none"> Optimisé pour votre cloueur BX – l'adaptation par friction du nez du cloueur et la méthode de fixation sans perçage permettent des installations plus rapides, plus faciles et pratiquement sans poussière. Méthodes de fixation polyvalentes - compatibles avec les chevilles à emboîter, les vis à bois et à métal ou les chevilles plastiques standard pour la fixation à une grande variété de matériaux supports. Système d'interverrouillage – système entièrement modulaire vous permettant de combiner plusieurs attaches afin d'élargir votre gamme d'applications. Installations de grande qualité – solution homologuée ETE avec une durée de vie de 50 ans dans le béton fissuré et conforme aux normes UL. Production plus durable – fabriqué à partir de matériaux plus respectueux de l'environnement afin de réduire l'empreinte carbone. Sécurité incendie - version ignifuge disponible

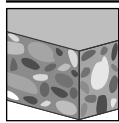
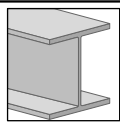
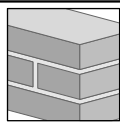
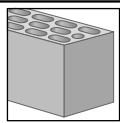
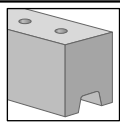
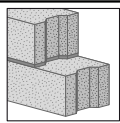
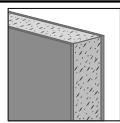
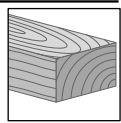
2 CONDITIONS D'APPLICATION

2.1 Exemples d'application

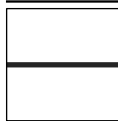


Fixation de câbles groupés

2.2 Matériau support

							
Béton	Acier	Brique pleine	Brique creuse	Maçonnerie en pierre calcaire	Béton poreux	Mur sec / Plaques de plâtre	Bois

2.3 Conditions de charge



Statique/quasi statique

2.4 Conditions environnementales



Milieu intérieur sec



• Pour de plus amples informations, reportez-vous au [manuel sur la corrosion Hilti](#)

2.5 Conditions de température

Élément	Pièce de composant	Température de service	Température d'installation
		T [°C]	T [°C]
X-EKB MX	Agrafe à câble	0 - 40	-10 - 40

3 HOMOLOGATIONS ET CERTIFICATS

Autorité	Numéro d'homologation / de certificat	Date d'émission
Deutsches Institut für Bautechnik (DIBt)	ETA-16/0301	19.12.2023

4 DONNÉES PRODUIT

4.1 Dimensions

Dessin technique	Élément	Hauteur h [mm]	Longueur l [mm]	Longueur l _s [mm]	Largeur w [mm]
	X-EKB 08 (02) MX	23	132	80	24,4

4.2 Propriétés du matériau pour pièces plastiques

Élément	Pièce de composant	Matériau	Couleur	Autres propriétés
X-EKB MX	Agrafe à câble	Polyéthylène haute densité (HDPE)	Gris clair	Matériau résistant aux UV, Sans halogène, Sans LABS, Sans silicone

5 RECOMMANDATION SYSTÈME

5.1 Recommandation de fixation

Élément	Fixation	Matériau support	Méthode de fixation
X-EKB MX	X-P 20 B4 MX, X-P 20 B3 MX	Béton, Maçonnerie en pierre calcaire	Recommandé
	X-P 17 B4 MX, X-P 24 B4 MX, X-P 17 B3 MX, X-P 24 B3 MX, X-C 20 B4 MX, X-C 20 B3 MX, X-C 24 B3 MX	Béton, Maçonnerie en pierre calcaire	Compatible
	X-S 14 B4 MX, X-S 14 B3 MX	Acier	Compatible
	X-EAI 30	Béton	Recommandé
	HMF 5x25, HMF 6x30, HUD-2 5x25, HUD-2 6x30	Brique pleine, Brique creuse, Béton poreux, Mur sec / Plaques de plâtre	Compatible
	S-WS 03 Z 4.2x35	Bois	Recommandé

5.2 Type de connexion

Type de connexion	Plafond	Élément	Élément connecté	Fixation
CT 1.1		X-EKB 08 (02) MX		HMF 5x25, HMF 6x30, HUD-2 5x25, HUD-2 6x30,
CT 2.1		X-EKB 08 (02) MX	X-EKB 08 (02) MX	S-WS 03 Z 4.2x35,
CT 3.1		X-EKB 08 (02) MX	X-EKS 16 (02) MX, X-EKS 19/20 (02) MX, X-EKS 25 (02) MX, X-EKS 32 (02) MX	X-C 20 B3 MX, X-C 20 B4 MX, X-C 24 B3 MX,
CT 4.1		X-EKB 08 (02) MX	X-EKSC 16 (02) MX, X-EKSC 19/20 (02) MX, X-EKSC 25 (02) MX, X-EKSC 32 (02) MX	X-P 17 B3 MX, X-P 17 B4 MX, X-P 24 B3 MX, X-P 24 B4 MX,
CT 5.1		X-EKB 08 (02) MX	X-FC 16-20 MX, X-FC 20-25 MX, X-FC 25-32 MX, X-FC 32-40 MX	X-P 20 B3 MX, X-P 20 B4 MX, X-S 14 B3 MX, X-S 14 B4 MX
CT 6.1		X-EKB 08 (02) MX		X-EAI 30
CT 7.1		X-EKB 08 (02) MX	X-EKB 08 (02) MX	

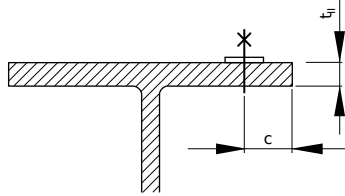
Positionnement de points de fixation.



- Pour les applications au sol, utilisez la même disposition des éléments que pour le plafond.

6 EXIGENCES EN MATIÈRE D'APPLICATION

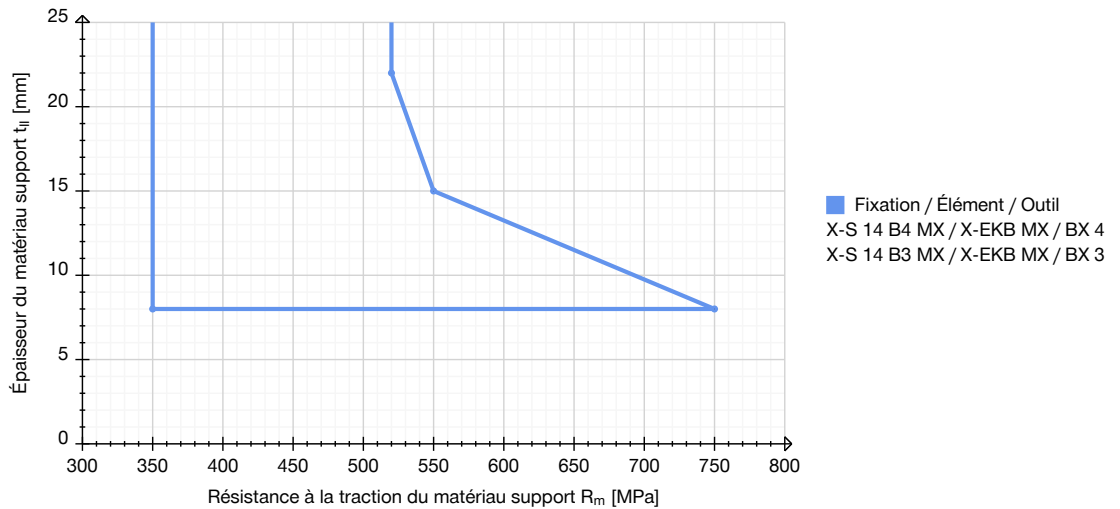
6.1 Propriétés du matériau support



Fixation d'élément sur acier

Matériau support	Acier
Épaisseur du matériau support t_{ij} [mm]	≥ 8
Distance au bord c [mm]	≥ 15

6.2 Plage d'applications en acier



7 DONNÉES DE PERFORMANCE

7.1 Charges recommandées sous charge statique ou quasi-statique

Type de connexion	Charge de traction N_{rec} [kN]
CT 1.1, CT 2.1, CT 3.1, CT 4.1, CT 5.1, CT 6.1, CT 7.1	0,006



- La redondance des points de fixation est requise.
- Nombre minimum de points de fixation pour les fixations de sécurité : ≥ 5 .

8 ASSURANCE QUALITÉ

8.1 Contrôle de profondeur d'ancrage

Plafond	Élément	Fixation	Implantation de la fixation h_{NHS} [mm]
	X-EKB 08 (02) MX	X-C 20 B3 MX, X-C 20 B4 MX, X-C 24 B3 MX, X-P 17 B3 MX, X-P 17 B4 MX, X-P 20 B3 MX, X-P 20 B4 MX, X-P 24 B3 MX, X-P 24 B4 MX	6-11
		X-S 14 B3 MX, X-S 14 B4 MX	6-9



- Les erreurs de pose visibles doivent être corrigées en réalisant une nouvelle fixation, avec un nouveau trou.
- Ces instructions abrégées peuvent varier selon l'application.
- Toujours consulter/suivre les instructions qui accompagnent le produit.

9 INFORMATIONS DE COMMANDE

9.1 Numéro d'article et description

Désignation	Code article	Description
HMF 5x25	2185263	HMF Ancrage plastique
HMF 6x30	2185268	HMF Ancrage plastique
HUD-2 5x25	2287817	HUD-2 Cheville murale en plastique
HUD-2 6x30	2287820	HUD-2 Cheville murale en plastique
S-WS 03 Z 4.2x35	413322	S-WS 03 Z Vis à bois
X-C 20 B3 MX	2123993	X-C B3 MX Clous béton (en bande)
X-C 20 B4 MX	2361658	X-C B4 MX Clous béton (en bande)
X-C 24 B3 MX	2123994	X-C B3 MX Clous béton (en bande)
X-EAI 30	2388261	X-EA MX Cheville à frapper
X-P 17 B3 MX	2156216	X-P B3 MX Clous béton (en bande)
X-P 17 B4 MX	2361537	X-P B4 MX Clous béton (en bande)
X-P 20 B3 MX	2156217	X-P B3 MX Clous béton (en bande)
X-P 20 B4 MX	2361538	X-P B4 MX Clous béton (en bande)
X-P 24 B3 MX	2156218	X-P B3 MX Clous béton (en bande)
X-P 24 B4 MX	2361539	X-P B4 MX Clous béton (en bande)
X-S 14 B3 MX	2156392	X-S B3 MX Clous en acier (en bande)
X-S 14 B4 MX	2361654	X-S B4 MX Clous en acier (en bande)



Hilti Aktiengesellschaft
9494 Schaan, Liechtenstein
P +423-234 2965

www.facebook.com/hiltigroup
www.hilti.group

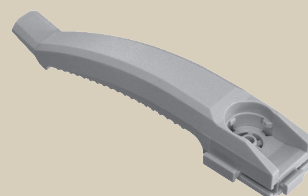


X-EKB MX MORSETTO

Scheda tecnica

[Italiano](#)

03.2024

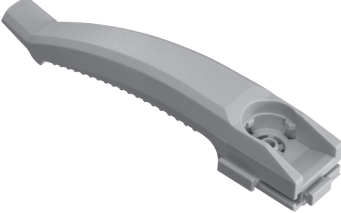


INDICE

1	Informazioni sul prodotto	2
1.1	Descrizione del prodotto	2
2	Condizioni di applicazione	2
2.1	Esempi di applicazione	2
2.2	Materiali di base	2
2.3	Condizioni di carico	2
2.4	Condizioni ambientali	3
2.5	Condizioni di temperatura	3
3	Omologazioni e certificazioni	3
4	Dati del prodotto	3
4.1	Dimensioni	3
4.2	Proprietà dei materiali per parti in plastica	3
5	Raccomandazioni sul sistema	4
5.1	Raccomandazioni per il elemento di fissaggio	4
5.2	Tipo di collegamento	4
6	Requisiti di applicazione	5
6.1	Proprietà del materiale di base	5
6.2	Range di applicazione in acciaio	5
7	Dati sulle prestazioni	5
7.1	Carichi consigliati ad azioni statiche o quasi statiche	5
8	Assicurazione qualità	6
8.1	Controllo della profondità di posa	6
9	Informazioni per l'ordine	6
9.1	Numero articolo e descrizione	6

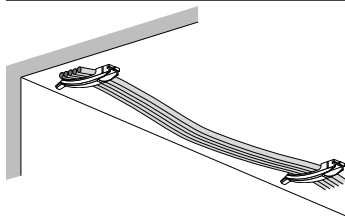
1 INFORMAZIONI SUL PRODOTTO

1.1 Descrizione del prodotto

Denominazione	Vantaggi
<p>X-EKB MX</p> 	<ul style="list-style-type: none"> • Ottimizzato per l'inchiodatrice BX: il nasello dell'inchiodatrice ad attrito e il metodo di fissaggio senza trapano consentono installazioni più veloci, più facili e quasi senza polvere. • Metodi di fissaggio versatili: compatibili con ancoranti a innesto, viti per legno e metallo o ancoranti in plastica standard per il fissaggio in un'ampia varietà di materiali di base. • Sistema di interblocco: il sistema completamente modulare consente di combinare più morsetti per ampliare la gamma di applicazioni. • Installazioni di alta qualità - soluzione approvata ETA con una durata di 50 anni in calcestruzzo fessurato e certificazione UL. • Prodotto in modo più sostenibile: realizzato con materiali più ecologici per contribuire a ridurre l'impronta di carbonio. • Sicurezza antincendio - disponibile la versione ignifuga

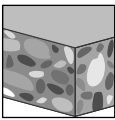
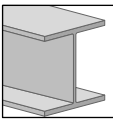
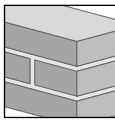
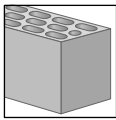
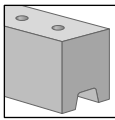
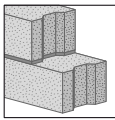
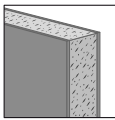
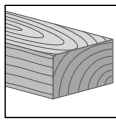
2 CONDIZIONI DI APPLICAZIONE

2.1 Esempi di applicazione

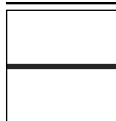


Fissaggio di cavi in fascio

2.2 Materiali di base

							
Calcestruzzo	Acciaio	Mattone solido	Mattone cavo	Muratura in pietra calcarea	Calcestruzzo poroso	Cartongesso / Pannello in cartongesso	Legno

2.3 Condizioni di carico



Statico/quasi statico

2.4 Condizioni ambientali



Interni asciutti



• Per maggiori dettagli consultare [Manuale sulla corrosione Hilti](#)

2.5 Condizioni di temperatura

Elemento	Parte del componente	Temperatura di servizio T [°C]	Temperatura di installazione T [°C]
X-EKB MX	Morsetto	0 - 40	-10 - 40

3 OMOLOGAZIONI E CERTIFICAZIONI

Autorità	Numero omologazione / certificazione	Data di emissione
Deutsches Institut für Bautechnik (DIBt)	ETA-16/0301	19.12.2023

4 DATI DEL PRODOTTO

4.1 Dimensioni

Disegno tecnico	Elemento	Altezza h [mm]	Lunghezza l [mm]	Lunghezza l _s [mm]	Larghezza w [mm]
	X-EKB 08 (02) MX	23	132	80	24,4

4.2 Proprietà dei materiali per parti in plastica

Elemento	Parte del componente	Materiale	Colore	Altre proprietà
X-EKB MX	Morsetto	Polietilene ad alta densità (HDPE)	Grigio chiaro	Materiale resistente ai raggi UV, Privo di LABS, Senza alogeni, Senza silicone

5 RACCOMANDAZIONI SUL SISTEMA

5.1 Raccomandazioni per il elemento di fissaggio

Elemento	Elemento di fissaggio	Materiale di base	Metodo di fissaggio
X-EKB MX	X-P 20 B4 MX, X-P 20 B3 MX	Calcestruzzo, Muratura in pietra calcarea	Consigliato
	X-P 17 B4 MX, X-P 24 B4 MX, X-P 17 B3 MX, X-P 24 B3 MX, X-C 20 B4 MX, X-C 20 B3 MX, X-C 24 B3 MX	Calcestruzzo, Muratura in pietra calcarea	Adatto
	X-S 14 B4 MX, X-S 14 B3 MX	Acciaio	Adatto
	X-EAI 30	Calcestruzzo	Consigliato
	HMF 5x25, HMF 6x30, HUD-2 5x25, HUD-2 6x30	Mattone solido, Mattone cavo, Calcestruzzo poroso, Cartongesso / Pannello in cartongesso	Adatto
	S-WS 03 Z 4.2x35	Legno	Consigliato

5.2 Tipo di collegamento

Tipo di collegamento	Soffitto	Elemento	Elemento di collegamento	Elemento di fissaggio
CT 1.1		X-EKB 08 (02) MX		HMF 5x25, HMF 6x30, HUD-2 5x25, HUD-2 6x30,
CT 2.1		X-EKB 08 (02) MX	X-EKB 08 (02) MX	S-WS 03 Z 4.2x35, X-C 20 B3 MX, X-C 20 B4 MX, X-C 24 B3 MX, X-P 17 B3 MX, X-P 17 B4 MX, X-P 24 B3 MX, X-P 24 B4 MX,
CT 3.1		X-EKB 08 (02) MX	X-EKS 16 (02) MX, X-EKS 19/20 (02) MX, X-EKS 25 (02) MX, X-EKS 32 (02) MX	X-P 20 B3 MX, X-P 20 B4 MX, X-S 14 B3 MX, X-S 14 B4 MX
CT 4.1		X-EKB 08 (02) MX	X-EKSC 16 (02) MX, X-EKSC 19/20 (02) MX, X-EKSC 25 (02) MX, X-EKSC 32 (02) MX	
CT 5.1		X-EKB 08 (02) MX	X-FC 16-20 MX, X-FC 20-25 MX, X-FC 25-32 MX, X-FC 32-40 MX	
CT 6.1		X-EKB 08 (02) MX		
CT 7.1		X-EKB 08 (02) MX	X-EKB 08 (02) MX	X-EAI 30

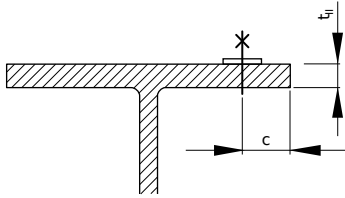
Posizionamento del punto di fissaggio.



• Per le applicazioni a pavimento, utilizzare la stessa disposizione degli elementi prevista per il soffitto.

6 REQUISITI DI APPLICAZIONE

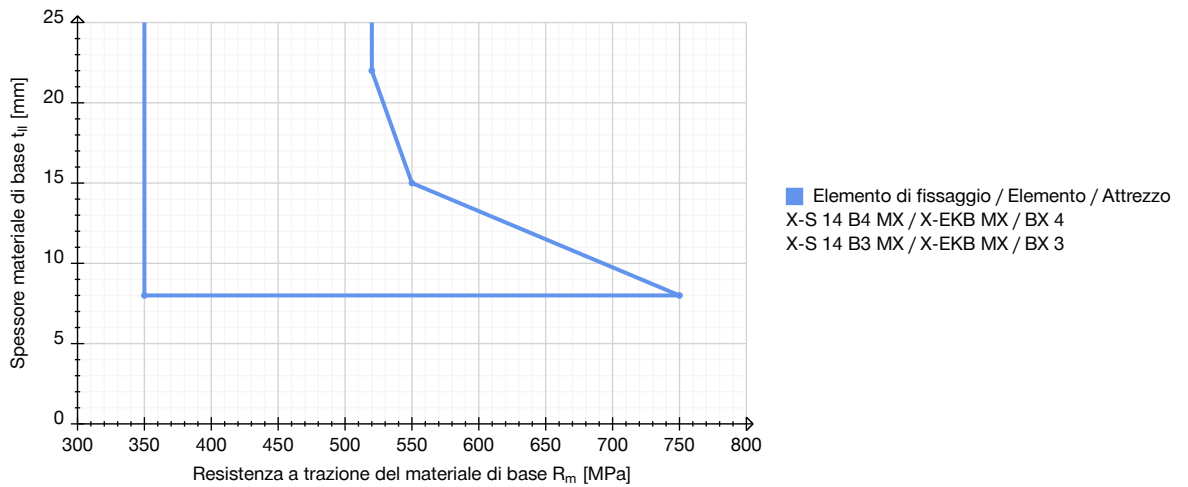
6.1 Proprietà del materiale di base



Fissaggio di elemento all'acciaio

Materiale di base	Acciaio
Base material thickness t_{II} [mm]	≥ 8
Edge distance c [mm]	≥ 15

6.2 Range di applicazione in acciaio



7 DATI SULLE PRESTAZIONI

7.1 Carichi consigliati ad azioni statiche o quasi statiche

Tipo di collegamento	Carico a trazione N_{rec} [kN]
CT 1.1, CT 2.1, CT 3.1, CT 4.1, CT 5.1, CT 6.1, CT 7.1	0,006



- È necessaria una ridondanza dei punti di fissaggio.
- Numero minimo di punti di fissaggio per fissaggi rilevanti per la sicurezza: ≥ 5 .

8 ASSICURAZIONE QUALITÀ

8.1 Controllo della profondità di posa

Soffitto	Elemento	Elemento di fissaggio	Distanziatore chiodo h_{NHS} [mm]
	X-EKB 08 (02) MX	X-C 20 B3 MX, X-C 20 B4 MX, X-C 24 B3 MX, X-P 17 B3 MX, X-P 17 B4 MX, X-P 20 B3 MX, X-P 20 B4 MX, X-P 24 B3 MX, X-P 24 B4 MX	6-11
		X-S 14 B3 MX, X-S 14 B4 MX	6-9



- Gli errori di impostazione evidenti devono essere corretti sostituendo l'elemento di fissaggio, realizzando un nuovo foro.
- Di seguito sono riportate istruzioni brevi che possono variare a seconda dell'applicazione.
- Consultare/seguire sempre le istruzioni allegate al prodotto.

9 INFORMAZIONI PER L'ORDINE

9.1 Numero articolo e descrizione

Denominazione	Codice articolo	Descrizione
HMF 5x25	2185263	HMF Tassello plastico
HMF 6x30	2185268	HMF Tassello plastico
HUD-2 5x25	2287817	HUD-2 Spina a muro in plastica
HUD-2 6x30	2287820	HUD-2 Spina a muro in plastica
S-WS 03 Z 4.2x35	413322	S-WS 03 Z Viti da legno
X-C 20 B3 MX	2123993	X-C B3 MX Chiodi per calcestruzzo (a nastro)
X-C 20 B4 MX	2361658	X-C B4 MX Chiodi per calcestruzzo (a nastro)
X-C 24 B3 MX	2123994	X-C B3 MX Chiodi per calcestruzzo (a nastro)
X-EAI 30	2388261	X-EA MX Tassello a innesto
X-P 17 B3 MX	2156216	X-P B3 MX Chiodi per calcestruzzo (a nastro)
X-P 17 B4 MX	2361537	X-P B4 MX Chiodi per calcestruzzo (a nastro)
X-P 20 B3 MX	2156217	X-P B3 MX Chiodi per calcestruzzo (a nastro)
X-P 20 B4 MX	2361538	X-P B4 MX Chiodi per calcestruzzo (a nastro)
X-P 24 B3 MX	2156218	X-P B3 MX Chiodi per calcestruzzo (a nastro)
X-P 24 B4 MX	2361539	X-P B4 MX Chiodi per calcestruzzo (a nastro)
X-S 14 B3 MX	2156392	X-S B3 MX Chiodo per acciaio (a nastro)

Denominazione	Codice articolo	Descrizione
X-S 14 B4 MX	2361654	X-S B4 MX Chiodo per acciaio (a nastro)



Hilti Aktiengesellschaft
9494 Schaan, Liechtenstein
P +423-234 2965

www.facebook.com/hiltigroup
www.hilti.group